

# LM100SS1T523

Color STN-LCD Module  
(Handheld PC)

## Features

- 25 cm [10"] SVGA format
- Low power consumption (1.52 W)
- High contrast (50 : 1)
- Thin structure (6.8 mm)
- Built-in CCFT backlight

## Specifications

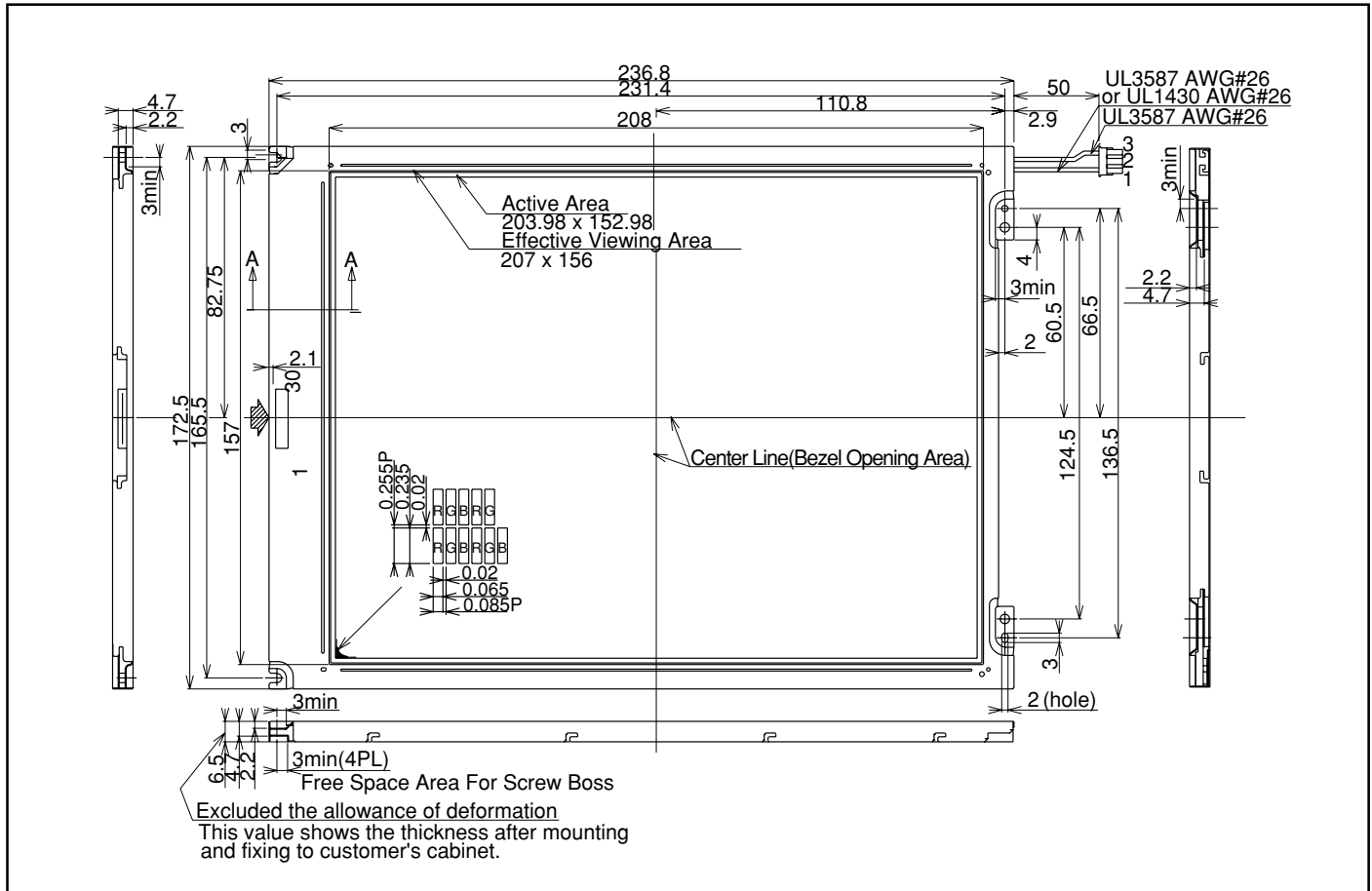
Parameter		Unit
Display size	25 [10]	cm [ " ]
Dot format (H x V)	800 x RGB x 600	dot
Dot pitch (H x V)	0.085 x 0.255	mm
Active area (H x V)	204.0 x 153.0	mm
Panel type	*1	-
Panel mode	Transmissive	-
Contrast ratio	50 : 1	-
Response time	300	ms
Brightness	100	cd/m <sup>2</sup>

Parameter		Unit
Backlight type	1CCFT (E)	-
Duty ratio	1/240	-
Logic voltage	3.3 Vcon	V
Power Consumption	1 520	mW
Outline dimensions (W x H x D)	236.8 x 172.5 x 6.8(max.)	mm
Weight	340	g
Operating temperature	0 to +40	°C
Storage temperature	-25 to +60	°C

\*1...Triple Super Twisted Nematic

## Outline Dimensions

unit : mm



In the absence of confirmation by device specification sheets, SHARP takes no responsibility for any defects that may occur in using any SHARP devices shown in catalogs, data books, etc. Contact SHARP in order to obtain the latest device specification sheets before using any SHARP device. Specifications are subject to change without notice for improvement.